

## Technical Specifications

### PARAFFIN BATHS

Number of paraffin bath	3pcs
Capacity	3.5Liters each
Temperature	55-70°C
Temperature accuracy	± 1°C
Paraffin melting time	approx.10hours

### RETORT BATH

Number of Retort bath	1pc
Capacity	max 300cassettes(3baskets )
Processing retort volume	4.5Liters
Temperature(paraffin):	55-70°C
Temperature(processing reagent):	55°C
Temperature accuracy:	± 1°C
Negative pressure max:	700mbar
Positive pressure max:	350mbar

### WASTE REAGENT BOTTLES

Number of waste reagent bottle	1pc
Maximum bottle volume::	5Liters

### REAGENT BOTTLES

Number of reagent bottles:	9pcs
Maximum bottle volume::	5Liters

### CLEANING BOTTLES

Number of cleaning bottles:	4pcs
Maximum bottle volume::	5Liters

### WASTE WAX BOX

Number of waste wax box:	1pc
Maximum bottle volume::	4.5Liters

Color touch screen: 10inches

Power supply: 220 V AC

Frequency: 50/60 Hz

Power: <1000 VA

Fuse: main power 3A, heating power 5 A

Dimensions: L: 650mm ,  
W: 690mm ,  
H: 1285mm,

Weight (net): approx190kg

# AMOS

SCIENTIFIC

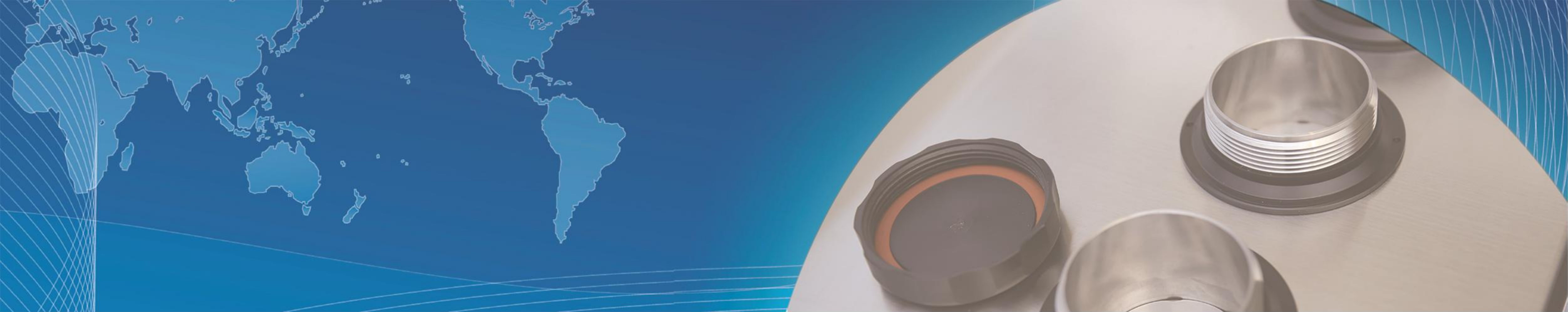
## AVTP 2500

### VACUUM TISSUE PROCESSOR

BETTER HISTOLOGY SOLUTION

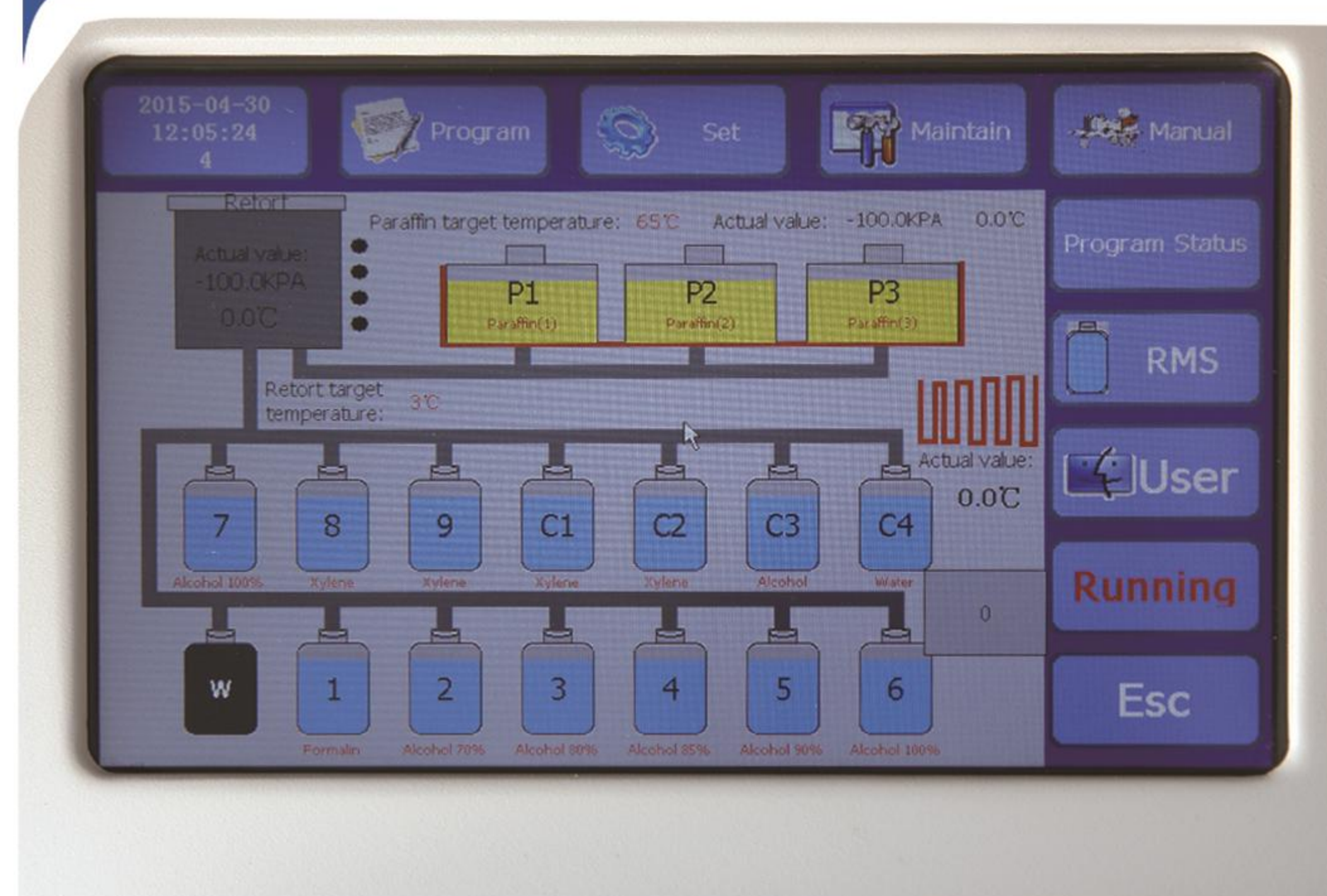
BETTER LIFE FROM HEALTH





## Display & Control

The large touch screen with graphic symbols can display the working status of each part, the display is intuitive and clear. In addition, it's very convenient for users to operate the instrument.



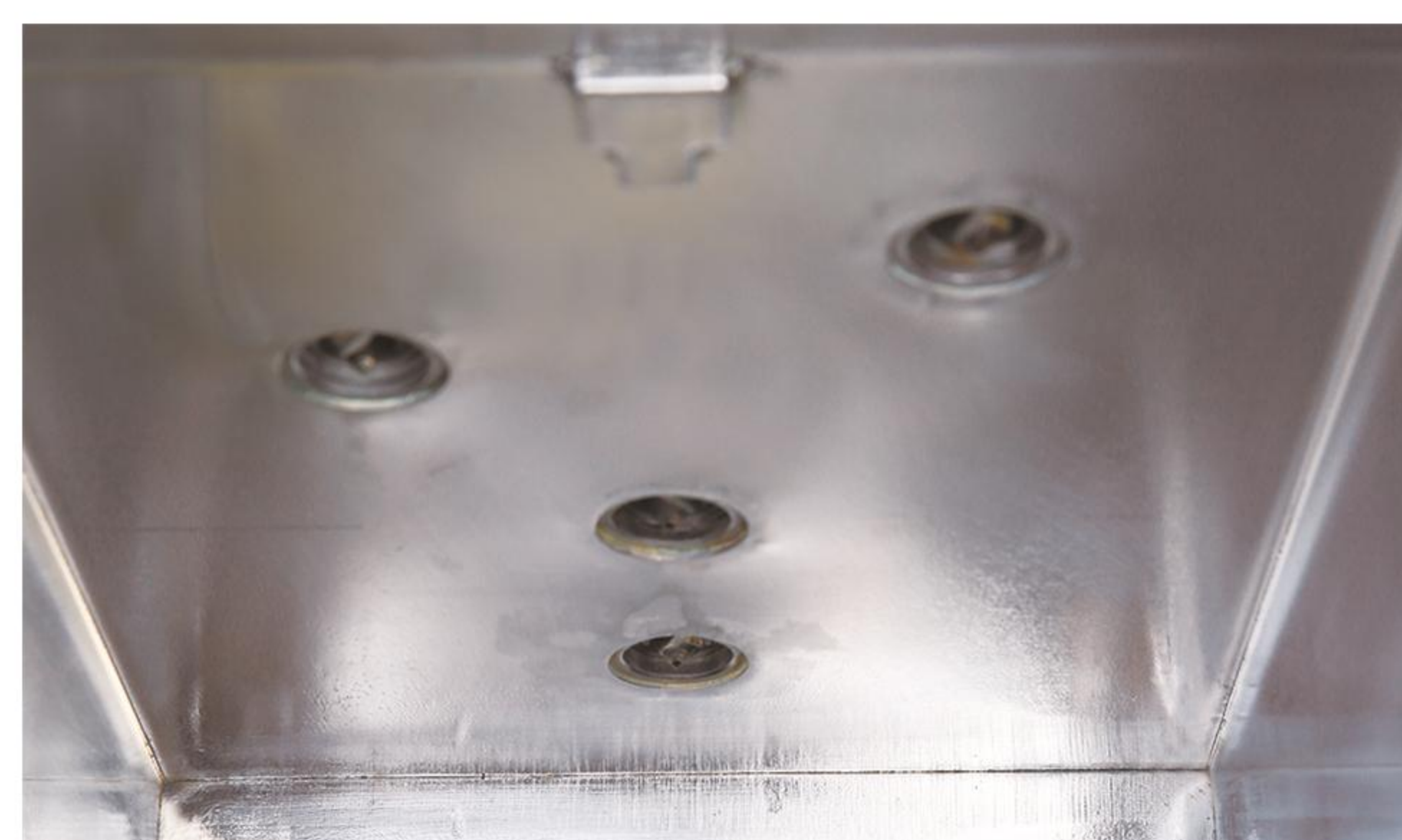
● Equipped with four liquid level sensors in the Retort Bath, which are used to monitor the inflow and outflow of reagents in the Retort Bath. In case of pipeline blockage or insufficient reagent volume, users can be promptly reminded to replace or supplement reagents or find the cause of faults. The time for entering and exiting the Retort Bath is dynamically controlled based on the actual amount of reagent in each reagent bottle, reducing dehydration assistance time.

## Intelligent

- This instrument is controlled by intelligent software.
- It has the function of automatic reagent replacement. When the alcohol in the first bottle is used for the set number of times, it will remind that the alcohol concentration is lower than the required concentration. The alcohol in this bottle will be drained first, and the alcohol in the second bottle can be automatically moved forward to achieve the goal of saving reagents.
- More than a hundred sets of work protocol can be set, and different processing times can be set for different tissues and working hours as much as possible. Existing protocol can also be modified.

## Safe

- The tissue is placed in a retort bath, not in contact with air, and will not air dry due to unexpected situations during the processing.
- The entire processing process is in a closed environment, avoiding the overflow of harmful gases and harming human health.
- The cover of the retort bath needs to be manually unlocked and opened to ensure the safety of operators.



## Reliable

- Equipped with two types of distribution valves, i.e. reagent and paraffin, effectively separating the two media and preventing pipeline blockage at room temperature to the greatest extent possible.
- Automatically check whether the sealing status of the instrument is intact before each operation, and alarm automatically in case of any malfunction.
- Power failure protection protocol, an external UPS (optional) ensures that the machine is protected in the event of a power failure. The original program will continue to run after a power failure. The power supply of the UPS can be configured according to the customer's requirements.



## Other Key Features

- The plug-in reagent bottle can conveniently fill or drain reagents.
- The maximum sample processing capacity is 300 cassettes.
- The Paraffin bath and Retort bath are both made of high-quality stainless steel, which is very convenient for cleaning.
- With reagent management function, it automatically reminds users to perform corresponding maintenance work, ensuring that each organizational processing achieves satisfactory results.
- Automatic reagent filling and draining
- Intelligent paraffin filling and draining
- Manual control function for dehydration operation, which facilitates system maintenance.
- There are multiple cleaning functions that can adapt to different cleaning conditions.

