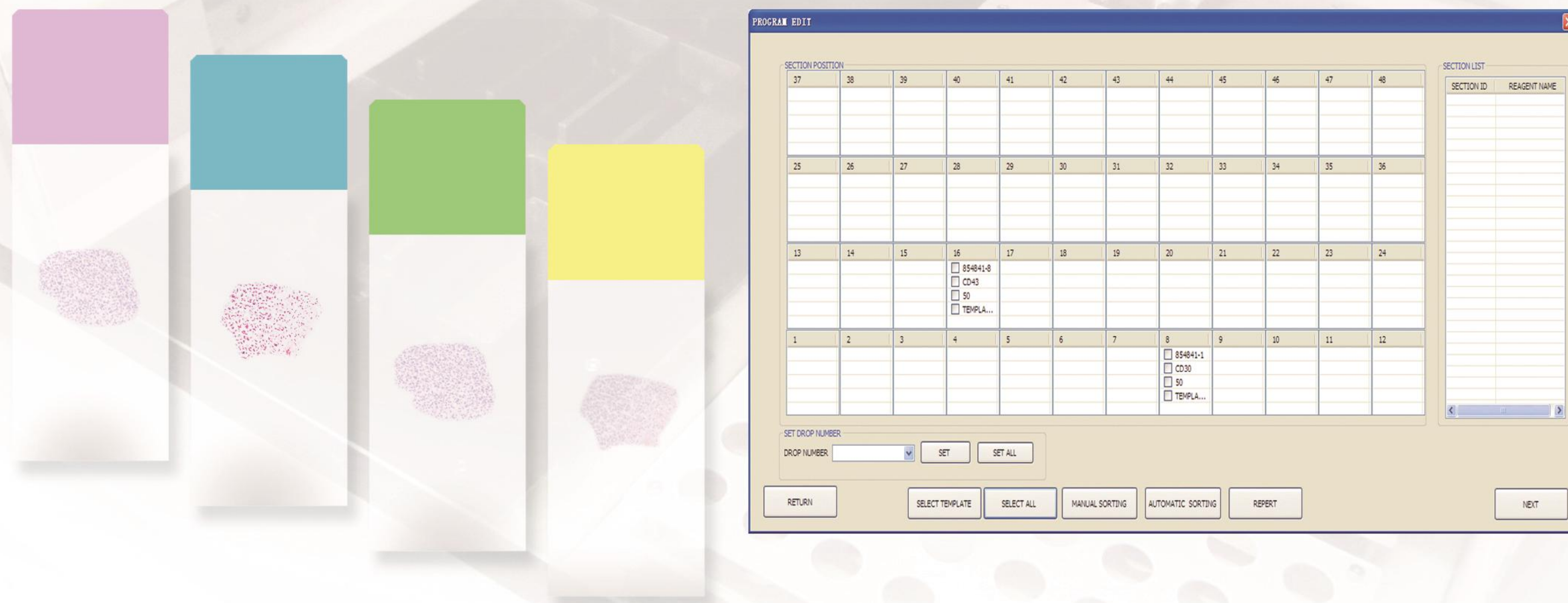


## AIHS 620 Immunohistochemistry Stainer



**AMOS**  
SCIENTIFIC

BETTER HISTOLOGY SOLUTION  
BETTER LIFE FROM HEALTH



- Opening the lid automatically stops movement in the X and Y axes to prevent injury to the human body. Closing the lid resumes operation automatically.
- Special operation protocols can be customized according to user needs.
- It's pre-programmed with over a hundred standardized immunohistochemistry and fast special staining protocols.
- It can be equipped with an external power supply to ensure complete experiment operation.
- Real-time monitoring of operation status, with clear display of running time, step monitoring, running progress, etc.

### Technical Parameters:

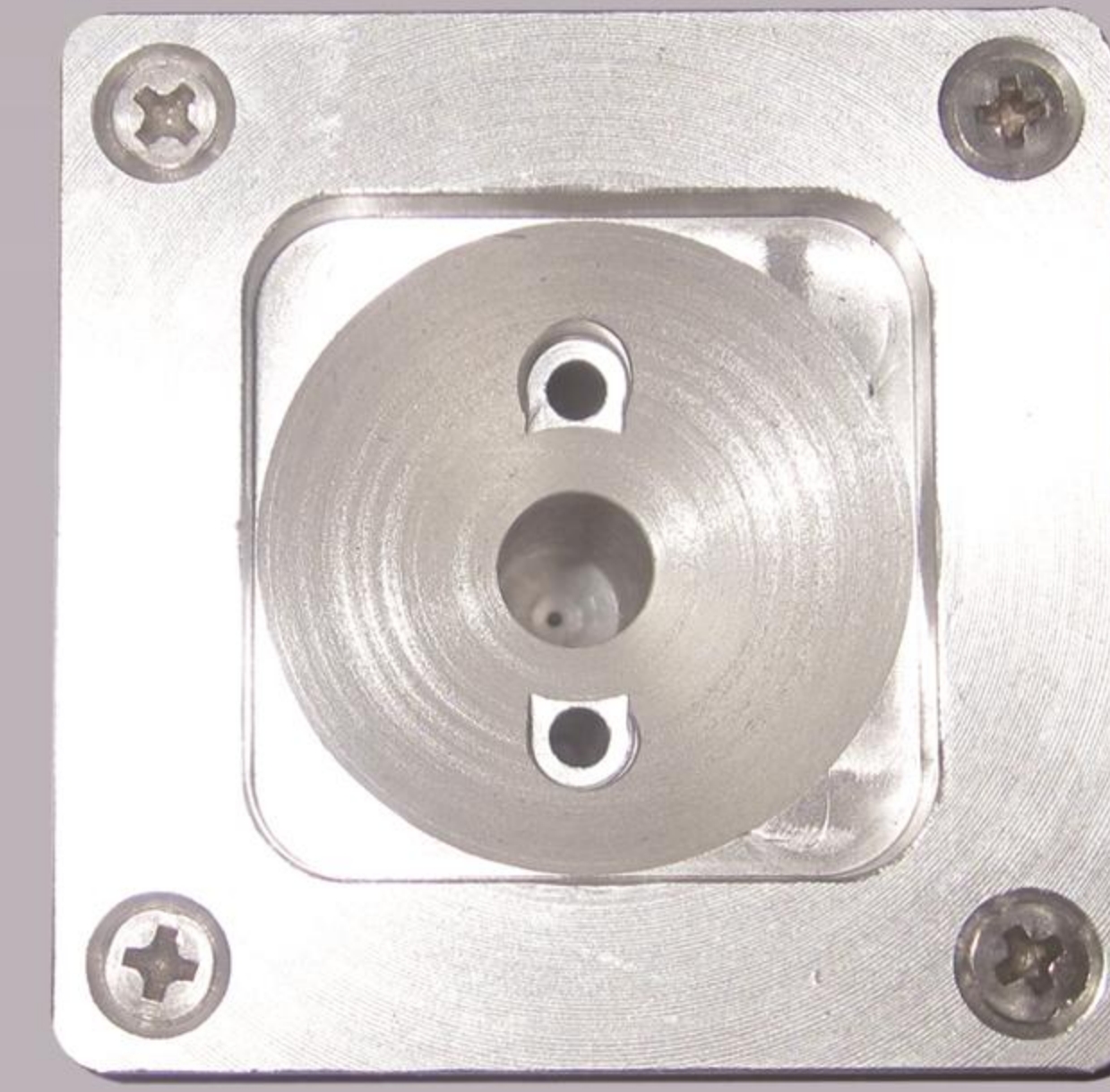
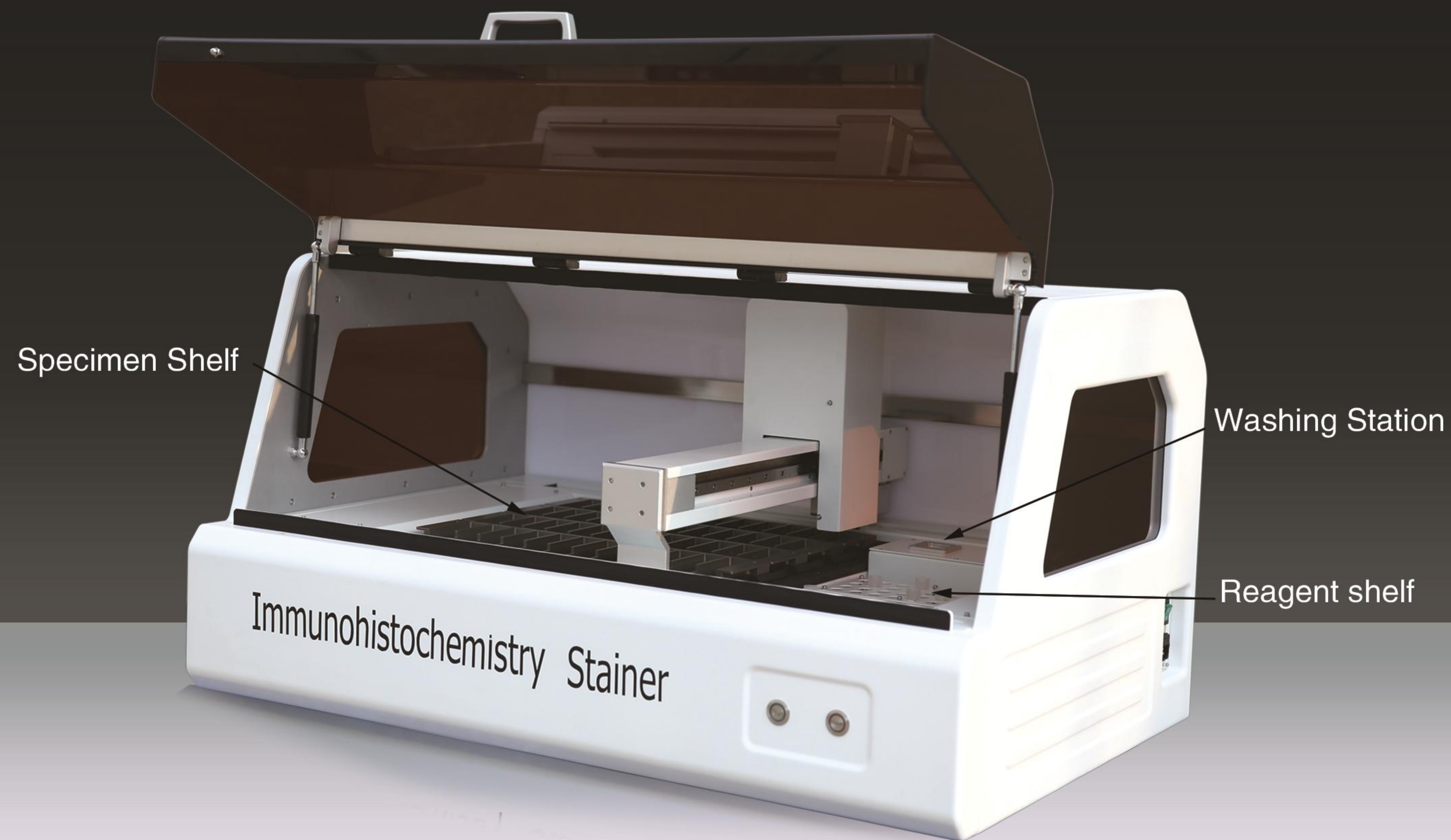
- Slide capacity: 48
- Reagent capacity: 64 types of reagents.
- Sample volume: 50ul, 75ul, 100ul, 150ul, 200ul, 250ul.
- Dimensions (Length x Width x Height): 1050mm x 680mm x 620mm.
- Power supply: 100-240V AC  $\pm$  10%, 50/60Hz.
- Power: 350W.
- Instrument weight (Net): 116kg.



# AIHS 620

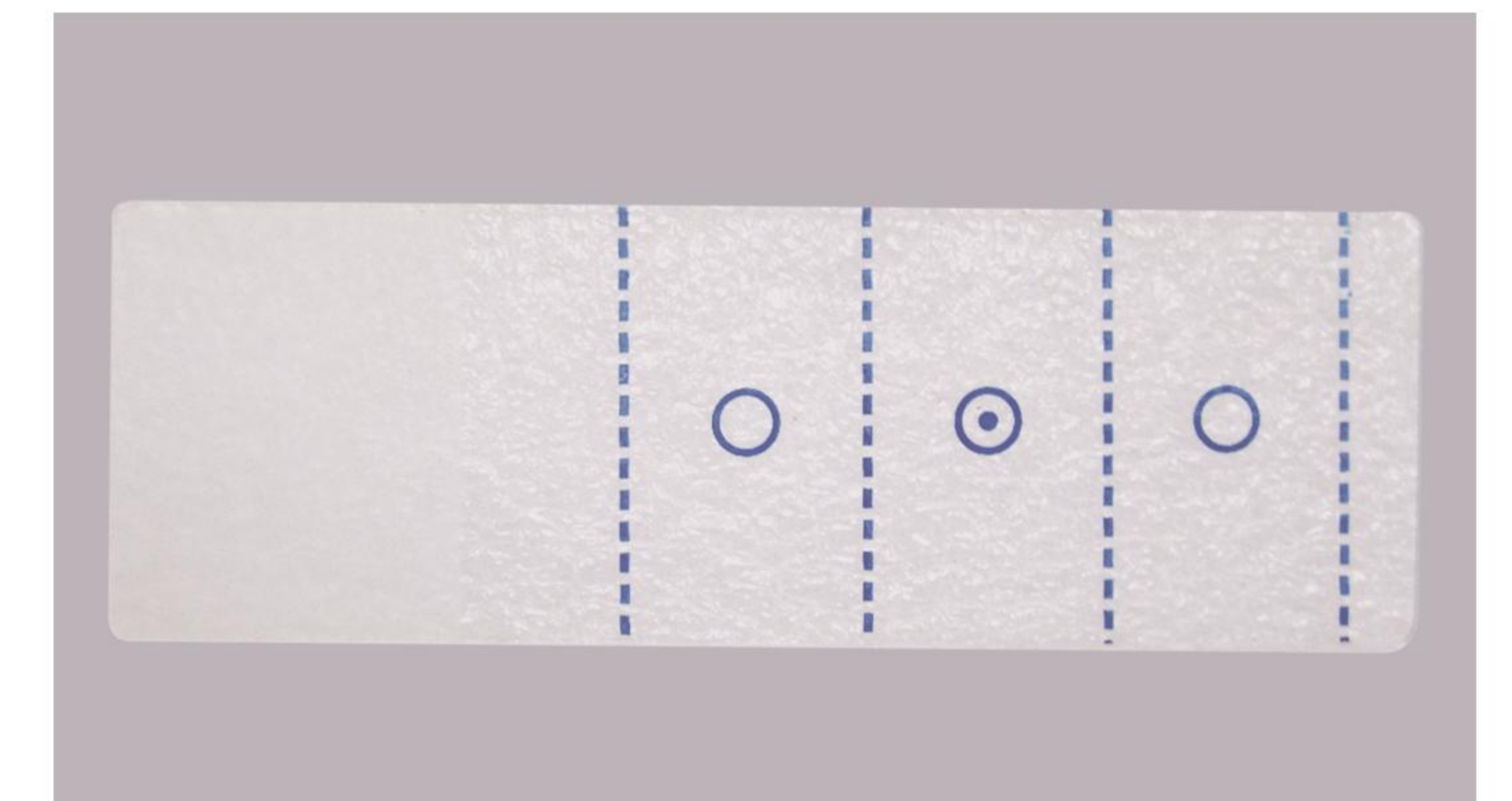
# IMMUNOHISTOCHEMISTRY STAINER





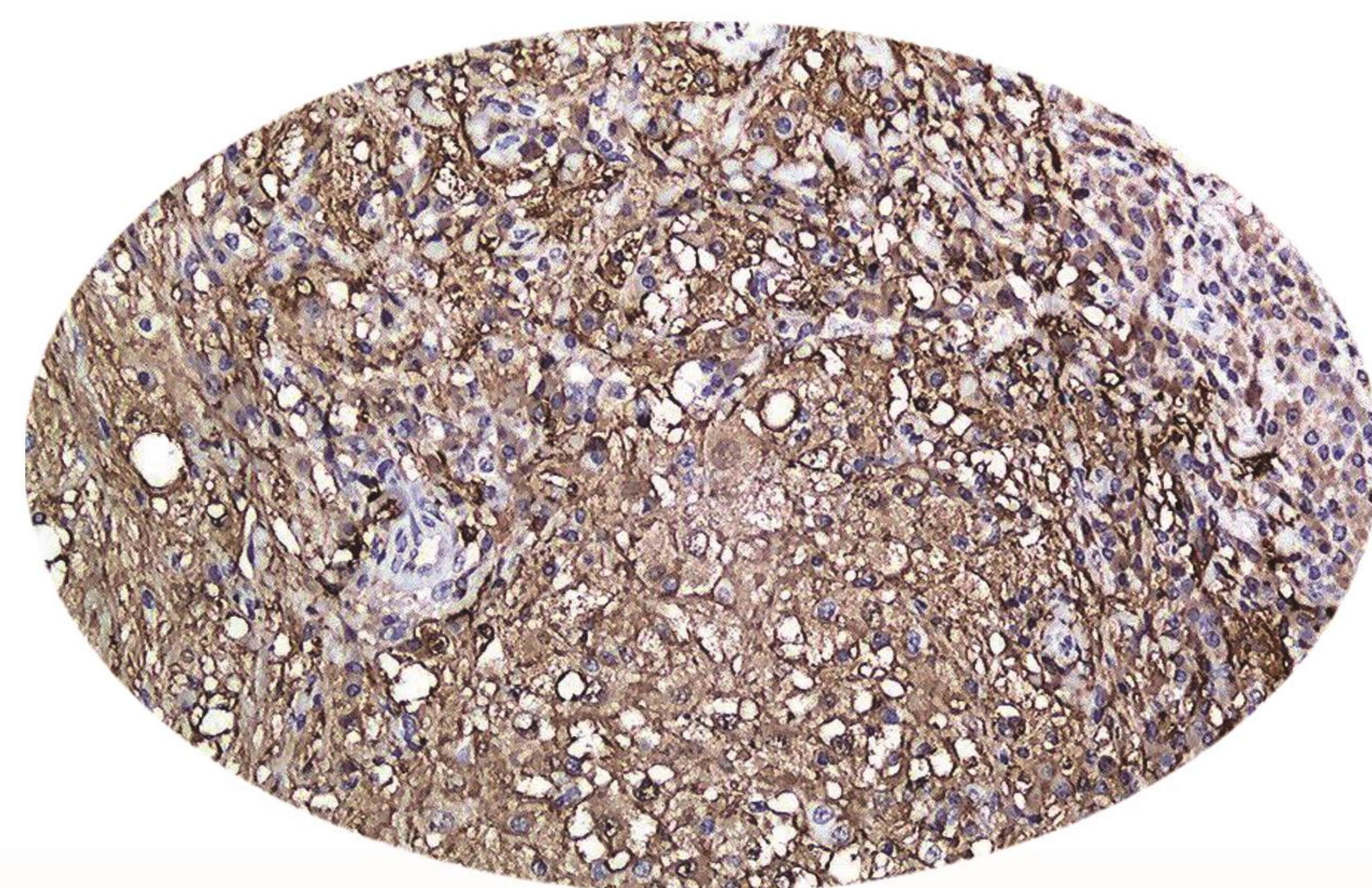
The clean-out opening of the drop tube can clean both the interior and exterior walls of the drop tube and avoid cross-contamination.

Slide loading frame with convenient pin insertion keeps the slide smooth and stable.



64 types of reagent location frames are available. After use, the reagent bottle can be removed and the antibody placed in the refrigerator.

The subarea location of the slide ensures that the minimum reagent quantity exerts its maximum effect. 1–3 tissues can be dyed simultaneously.



With the widespread application of immunohistochemistry technology in modern pathological diagnosis, its detection methods are related to the prognosis and treatment of patients, making the standardization of immunohistochemistry methods particularly important. The AIHS 620 Immunohistochemistry Stainer provides a scientific and reliable platform for this standardization.

- Open system: users can choose the most suitable reagents from different manufacturers according to their own needs.
- Suitable reagents for various specimens: Paraffin, frozen, puncture, cell smears, bone marrow slides.
- Precise micro-sampling: Droplet volume can be adjusted based on tissue slice size, with a minimum of 50ul, saving expensive reagents.
- Different slices can be set with different antibody droplet volumes.
- Good sealing performance of the entire machine, maintaining a humid internal environment.
- Password protection: Different permissions grant access to different content.
- Simultaneous cleaning of the inner and outer walls of the dropper, avoiding cross-contamination.