

Tissue Processor

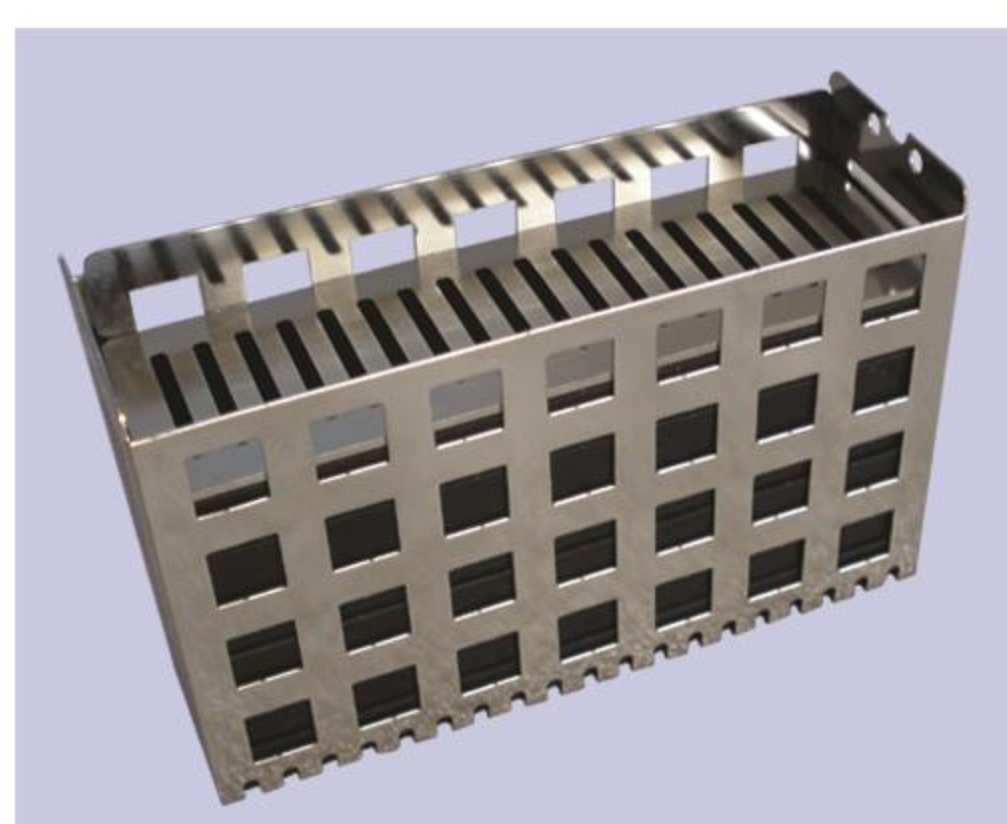
ATP 140 TISSUE PROCESSOR

BETTER HISTOLOGY SOLUTION BETTER LIFE FROM HEALTH

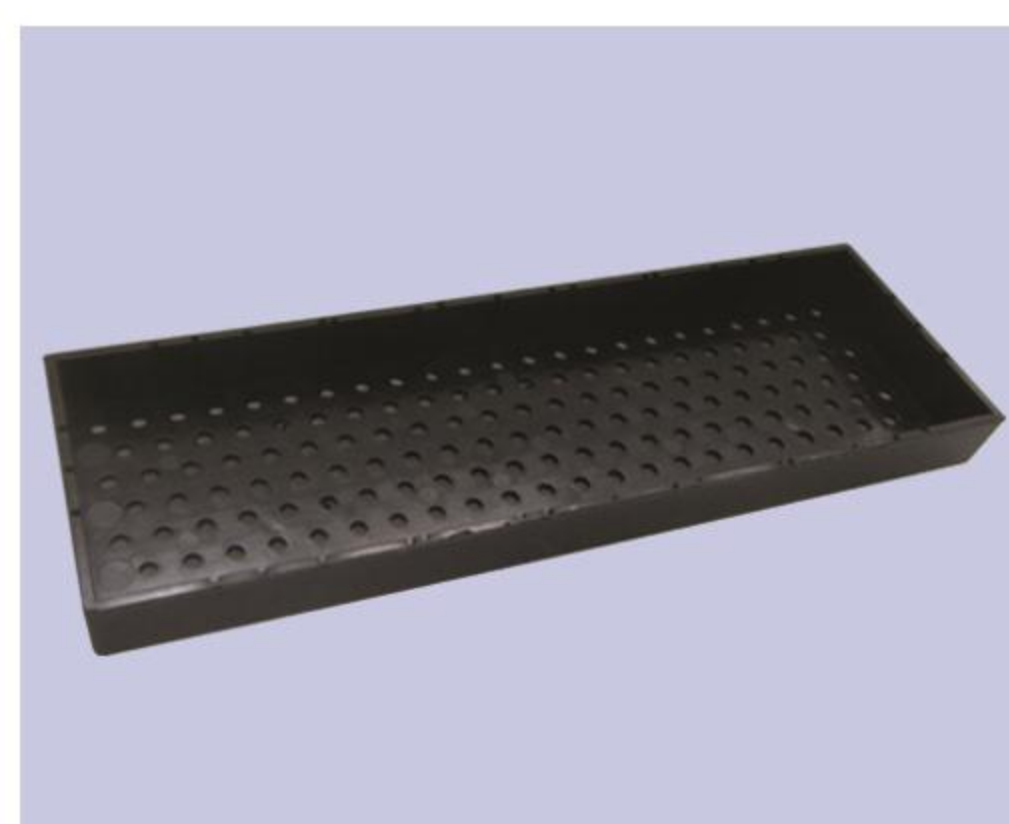
Characteristics

- Two slide racks can be operated simultaneously, each capable of executing different protocols, meeting the requirement of separate handling for specimens of different sizes, and improving the dehydration effect of different tissues.
- Anti-stalling protection: If the slide rack encounters an obstacle when entering the tank during operation, the slide rack will retract to the protection tank to avoid tissue wastage.
- Adaptive cover plate, combined with compound sealing gasket, can ensure good sealing performance of the tank cover, reduce liquid evaporation, and benefit the health of medical staff.
- Molded acrylic cover with sealing strip, double-layer activated carbon filtration, ensuring indoor air is not contaminated.
- Sealed touch panel, reliable operation, dust-proof, and waterproof.
- Easy-to-operate control panel combined with a large LCD screen, all control statuses displayed on the large LCD screen, making operation clear at a glance.
- Automatic delay function, delay range of 0-48 hours.
- Manual function can be inserted arbitrarily during operation to adjust the dehydration time and improve the dehydration effect.
- The Y-axis transmission mechanism is specially optimized in design, with smooth transmission, good stability, and long service life.
- Power-off protection function: External UPS (optional).

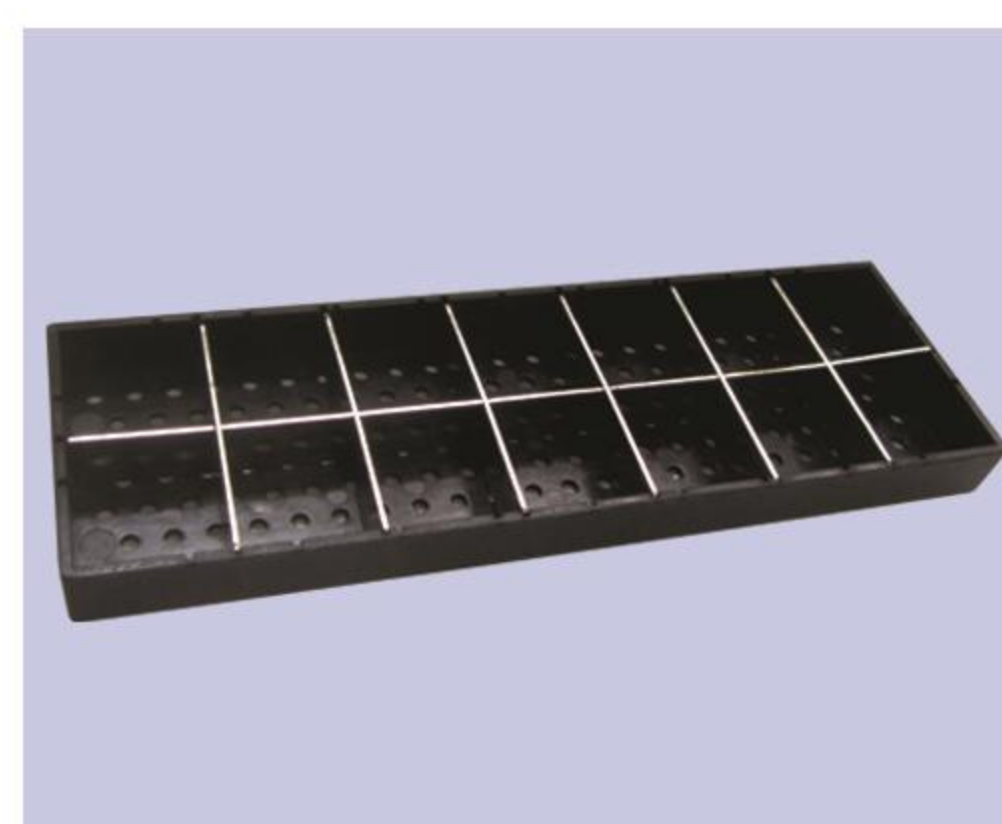
Universal rack system



Rack



Open-flat grid



2X7 grid panel
for large tissues



3X10 grid panel
for small tissues

Technical Specifications

NO	Specification	ATP 140
1	Number of racks	2
2	Number of tanks	14 (10 reagent plastic tanks & 4 wax stainless steel tanks)
3	Number of stored Protocols	8 (4 groups)
4	Capacity of tank	1.3L
5	Number of samples in process one time	144 standard cassettes
6	Retention time in each tank	1 minute ~ 99 hours and 59 minutes
7	Agitation time in each tank	5 sec~30 sec adjustable (default value is 15 sec) Two baskets in turn every 5 minutes
8	Drip stay time	2 seconds~ 99 seconds , adjustable (default Value:20 sec)
9	Delay time	0~48 hours
10	Temperature range	55°C~70°C
11	Temperature tolerance	± 1°C
12	Power supply	220V±10%, 50Hz / 110V±10%, 60Hz
13	Max power	450 W
14	Dimensions (W×D×H)	1247×470 × 550 mm
15	Weight	about 75 KG

